

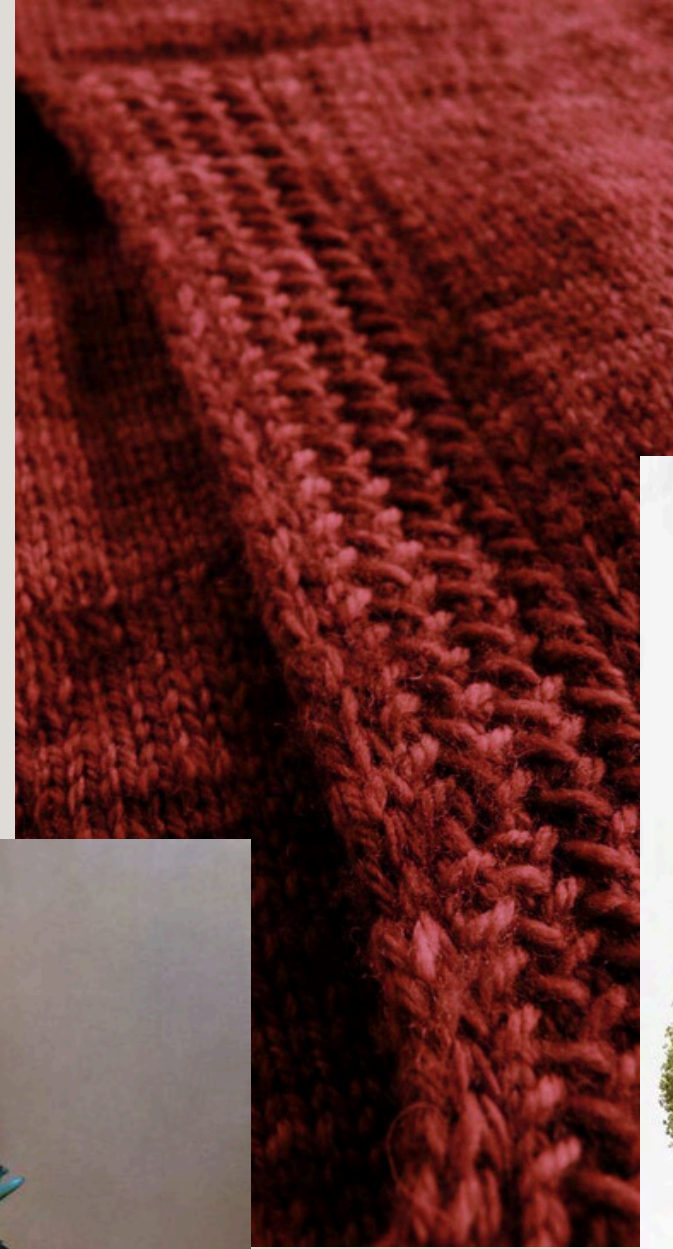
# FALL/WINTER 2025

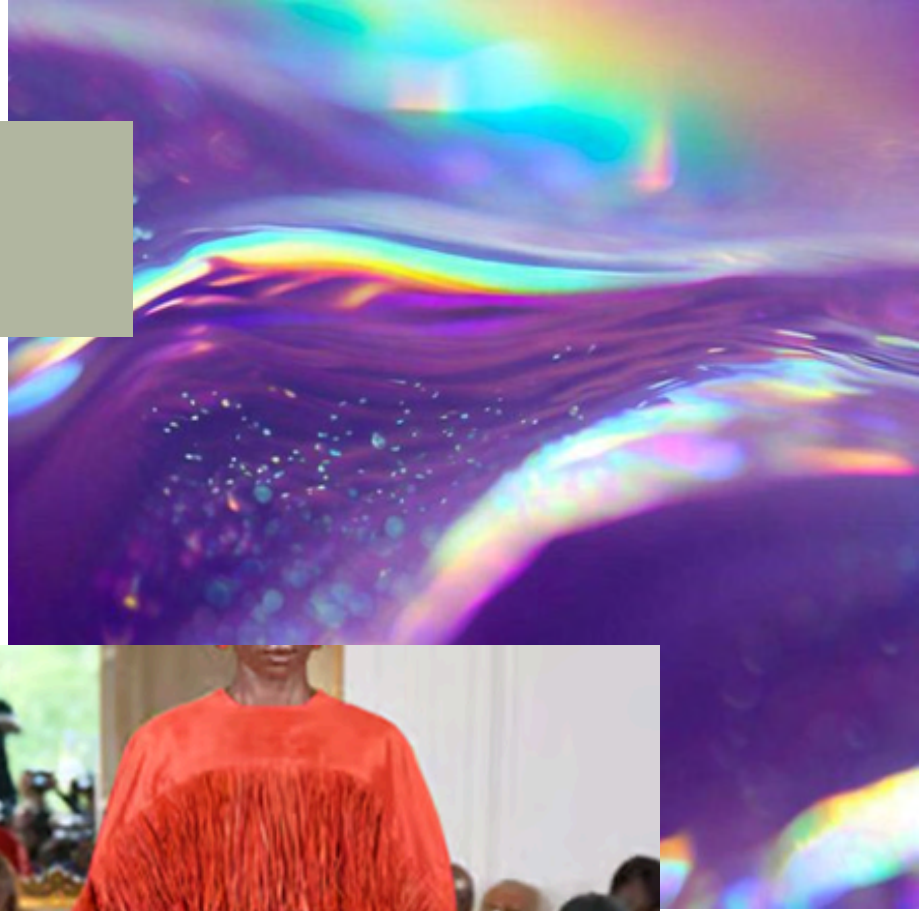
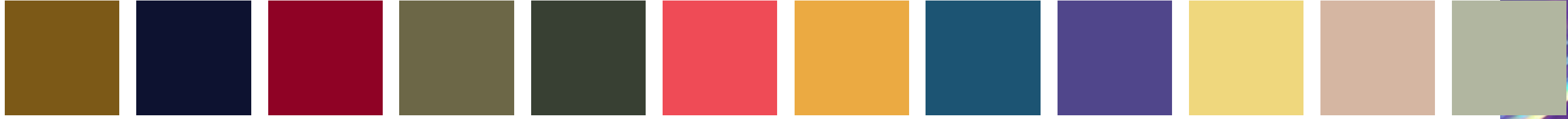
TREND REPORT



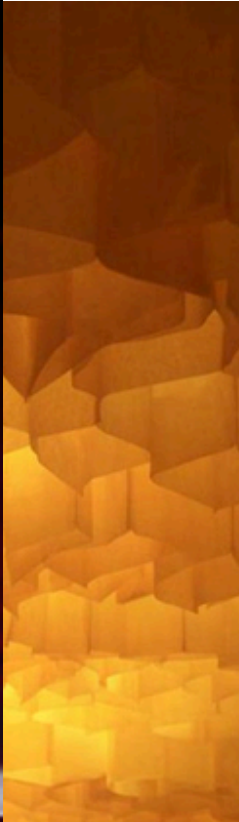
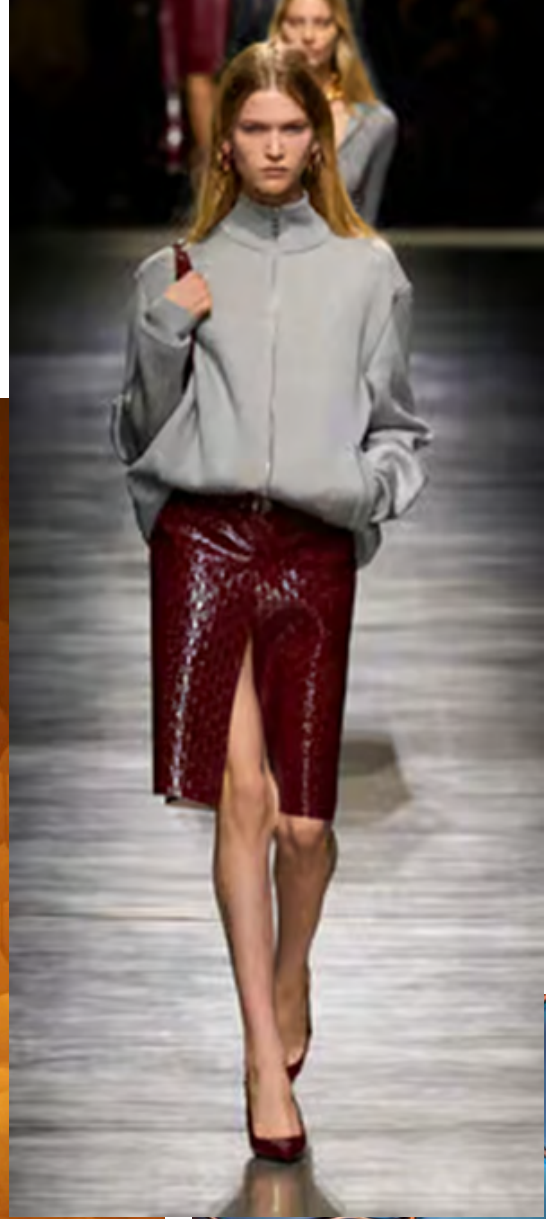
# CONTRASTING SUSTAINABILITY

The Fall/Winter 2025 season is defined by a balance between timeless neutrals and daring innovation. Core shades like gray and earthy neutrals anchor the palette, while satellite tones—including glitch-inspired dark hues, fresh acidic shades, and calming soft tones—add a creative edge. Organic shapes and digital-inspired prints dominate the patterns, with a strong focus on sustainability. Materials are shifting towards eco-friendly textiles and natural pigments, with mixed textures that reflect both comfort and technological innovation. This season embraces contrasts, merging tradition with futuristic optimism.



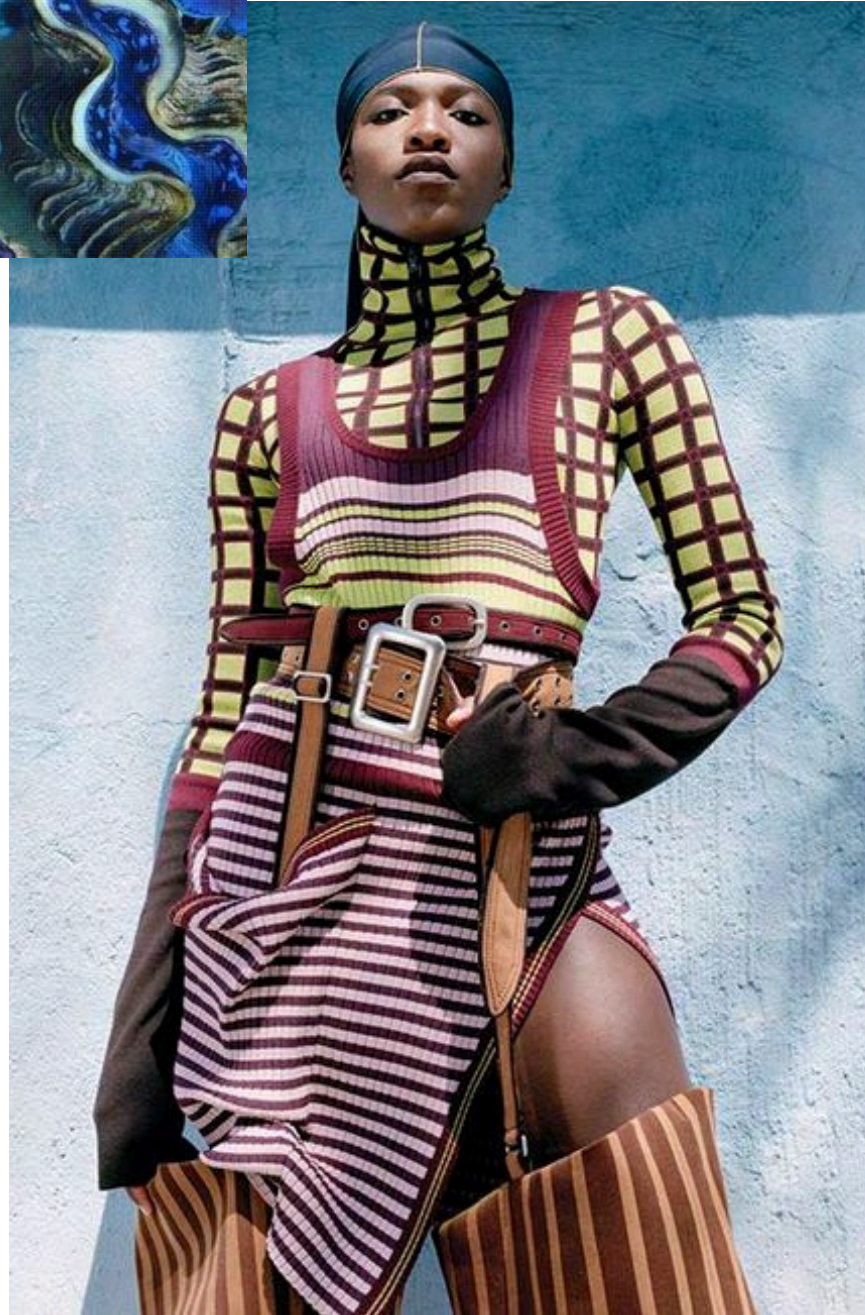


COLORS



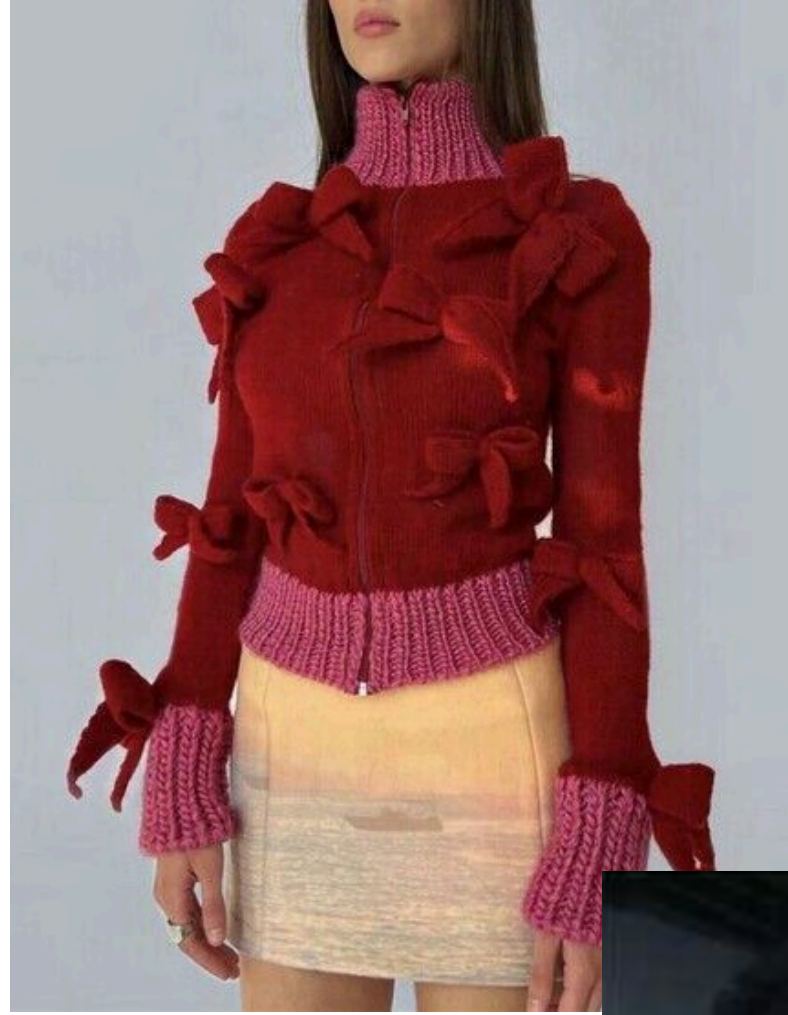


# PATTERNS





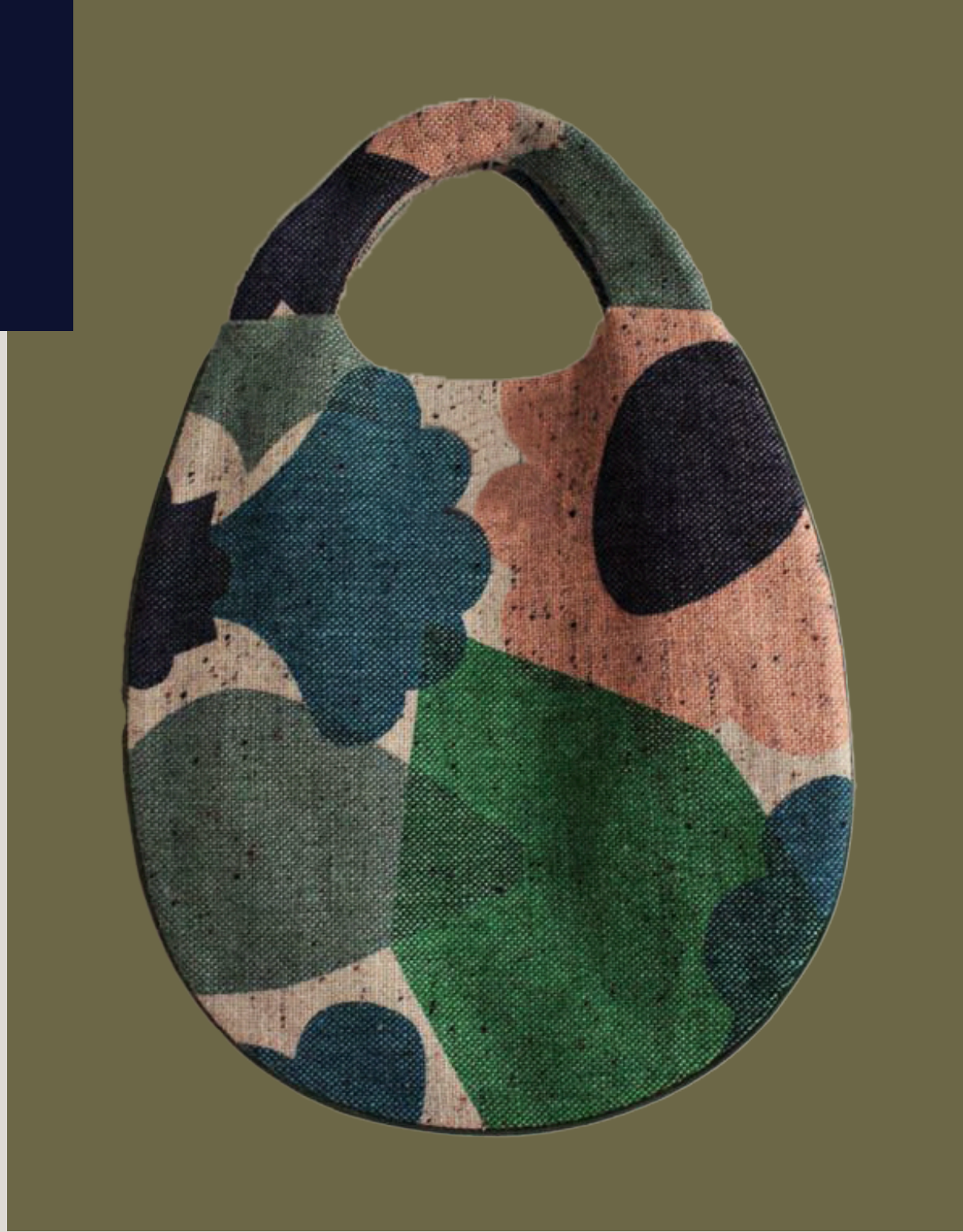
# MATERIALS



# — PACKAGING INTERPRETATION



— PACKAGING  
INTERPRETATION



# CONTACT US

---



info@encoreintl.com  
www.encoreintl.com

