

# TREND REPORT

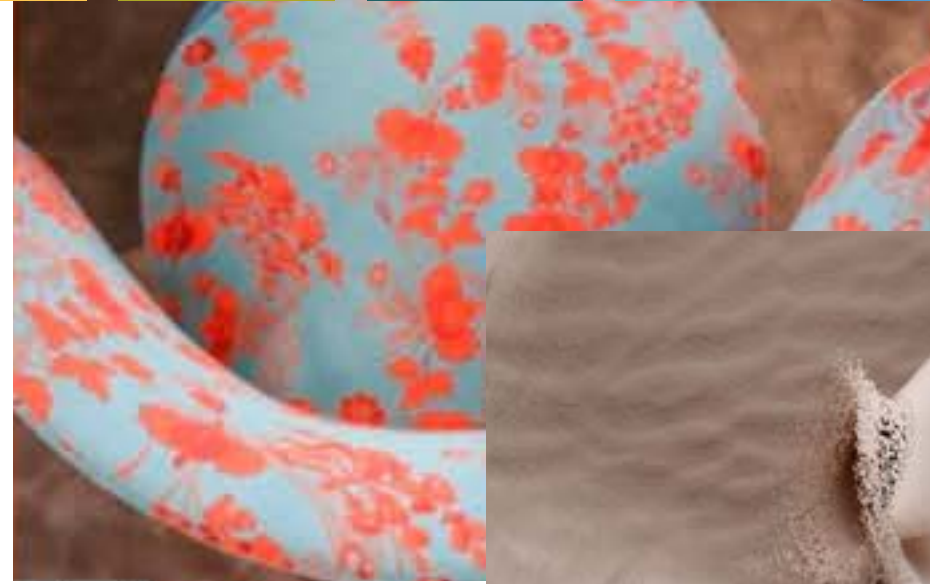
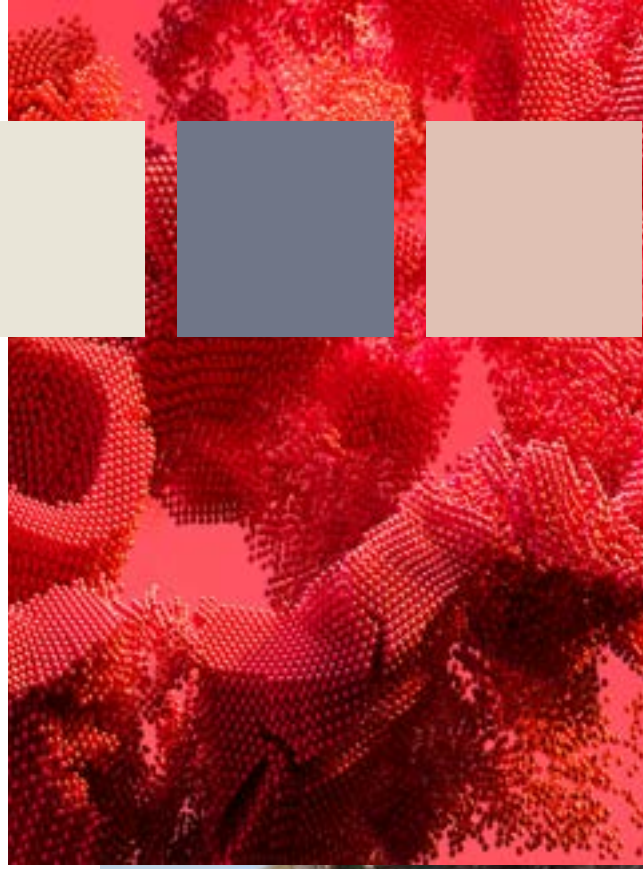
SPRING/SUMMER 2025



# TRANSCENDENT STABILITY

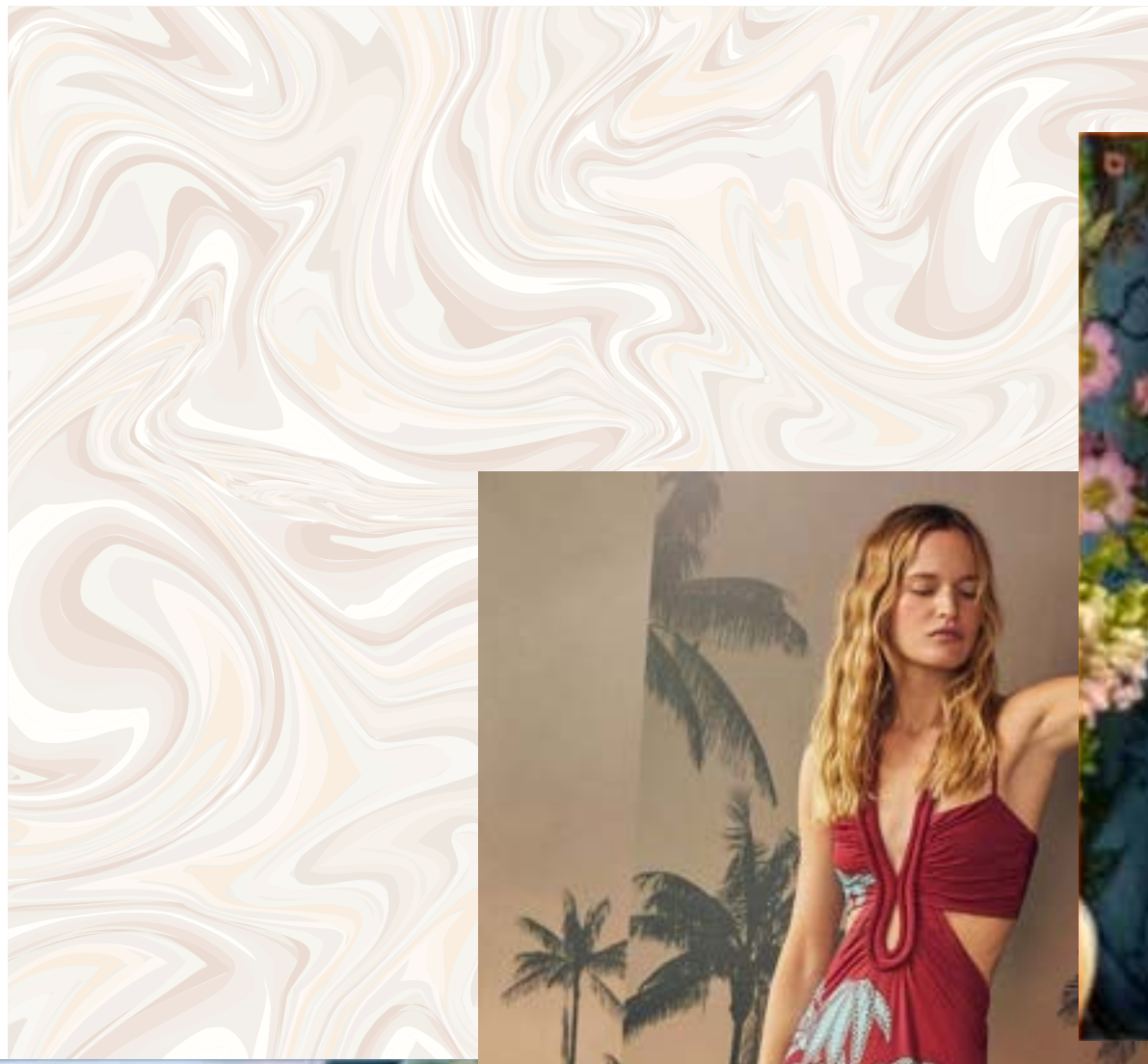
A new consciousness is embodied in symbiotic relationships between humanity, fauna, and the planet, alliances further enabled through our relationship with Generative AI. As we seek refuge and connectiveness in nature, we discover that the most essential things are in fact, the most primal ones.





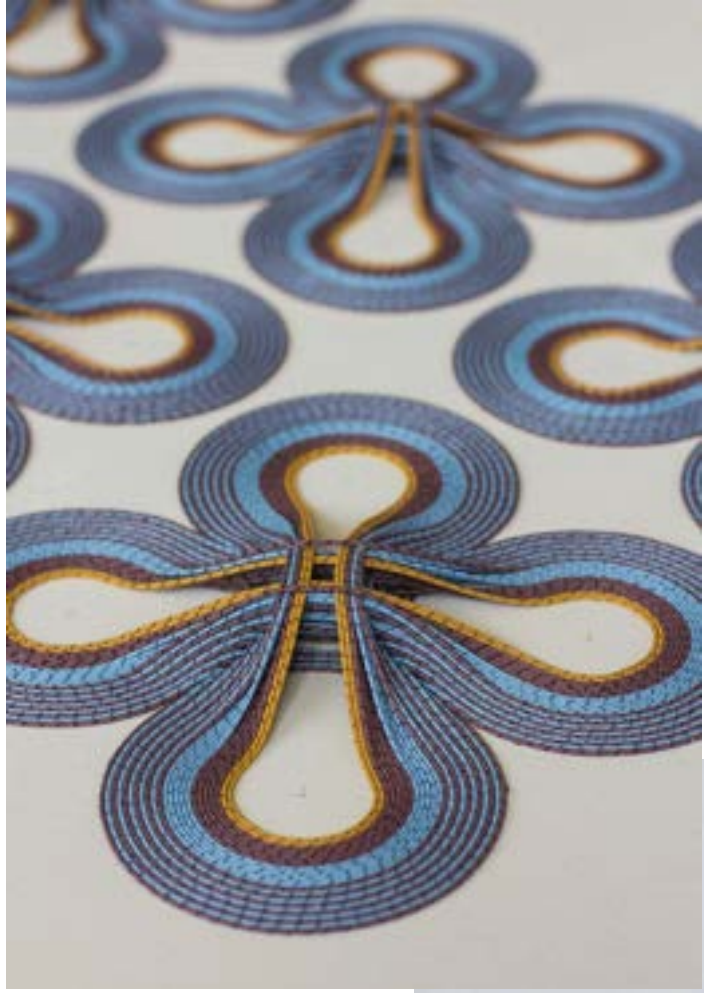
# COLORS





# PATTERNS





# MATERIALS

# — PACKAGING INTERPRETATION



# — PACKAGING INTERPRETATION



# CONTACT US

---



info@encoreintl.com  
www.encoreintl.com

